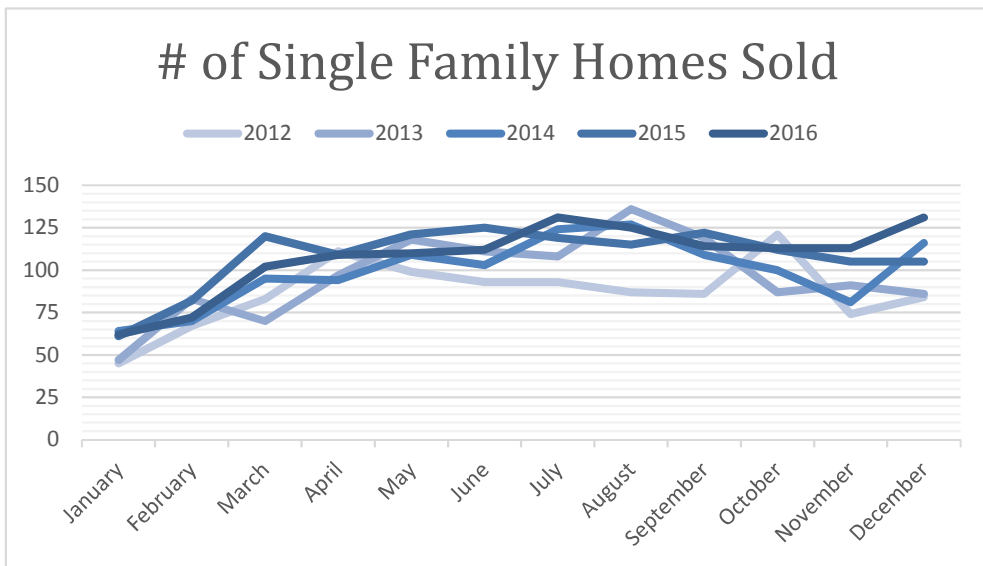
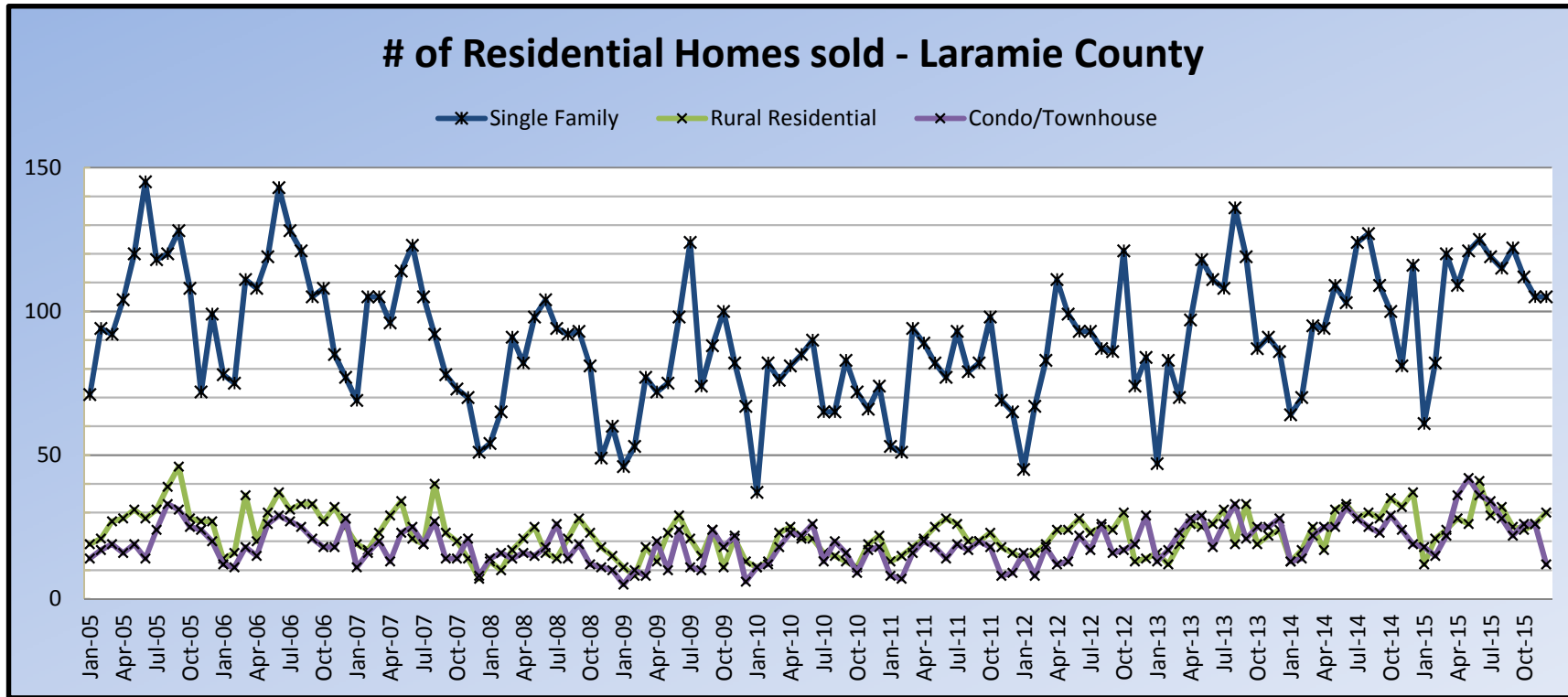


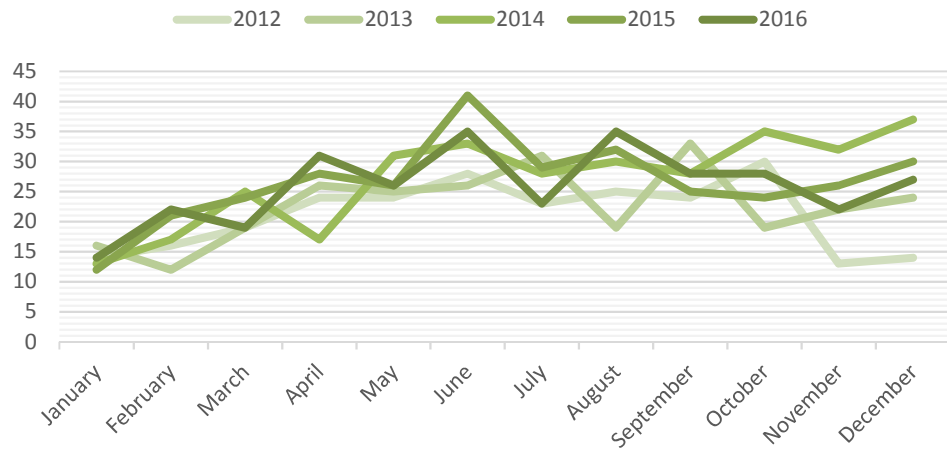
Residential Statistics - Laramie County



Single Family					
For month ending:	2012	2013	2014	2015	2016
January	45	47	64	61	62
February	67	83	70	82	72
March	83	70	95	120	102
April	111	97	94	109	109
May	99	118	109	121	110
June	93	111	103	125	112
July	93	108	124	119	131
August	87	136	127	115	125
September	86	119	109	122	114
October	121	87	100	112	113
November	74	91	81	105	113
December	84	86	116	105	131

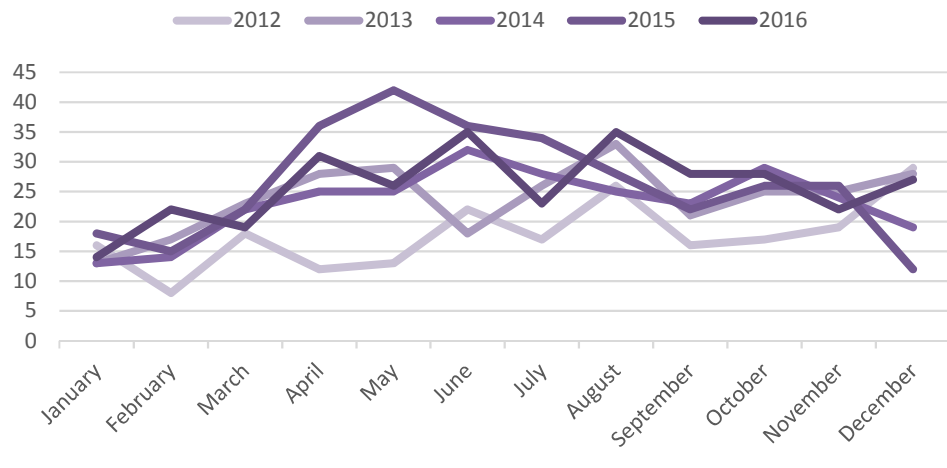
Residential Statistics - Laramie County

of Rural Residential Homes Sold



Rural Residential					
For month ending:	2012	2013	2014	2015	2016
January	14	16	13	12	14
February	16	12	17	21	22
March	19	19	25	24	19
April	24	26	17	28	31
May	24	25	31	26	26
June	28	26	33	41	35
July	23	31	28	29	23
August	25	19	30	32	35
September	24	33	28	25	28
October	30	19	35	24	28
November	13	22	32	26	22
December	14	24	37	30	27

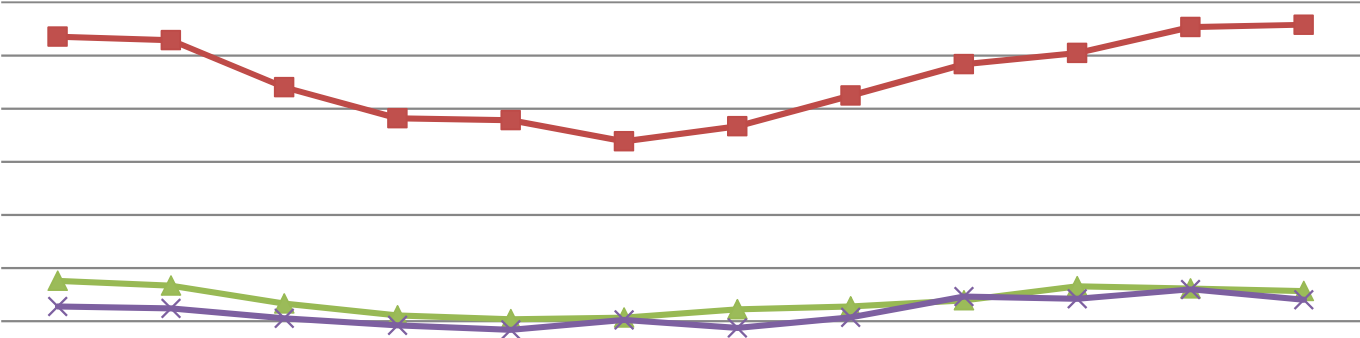
of Condo/Townhomes Sold



Condo/Townhome					
For month ending:	2012	2013	2014	2015	2016
January	16	13	13	18	14
February	8	17	14	15	22
March	18	23	22	22	19
April	12	28	25	36	31
May	13	29	25	42	26
June	22	18	32	36	35
July	17	26	28	34	23
August	26	33	25	28	35
September	16	21	23	22	28
October	17	25	29	26	28
November	19	25	24	26	22
December	29	28	19	12	27

Residential Statistics - Laramie County

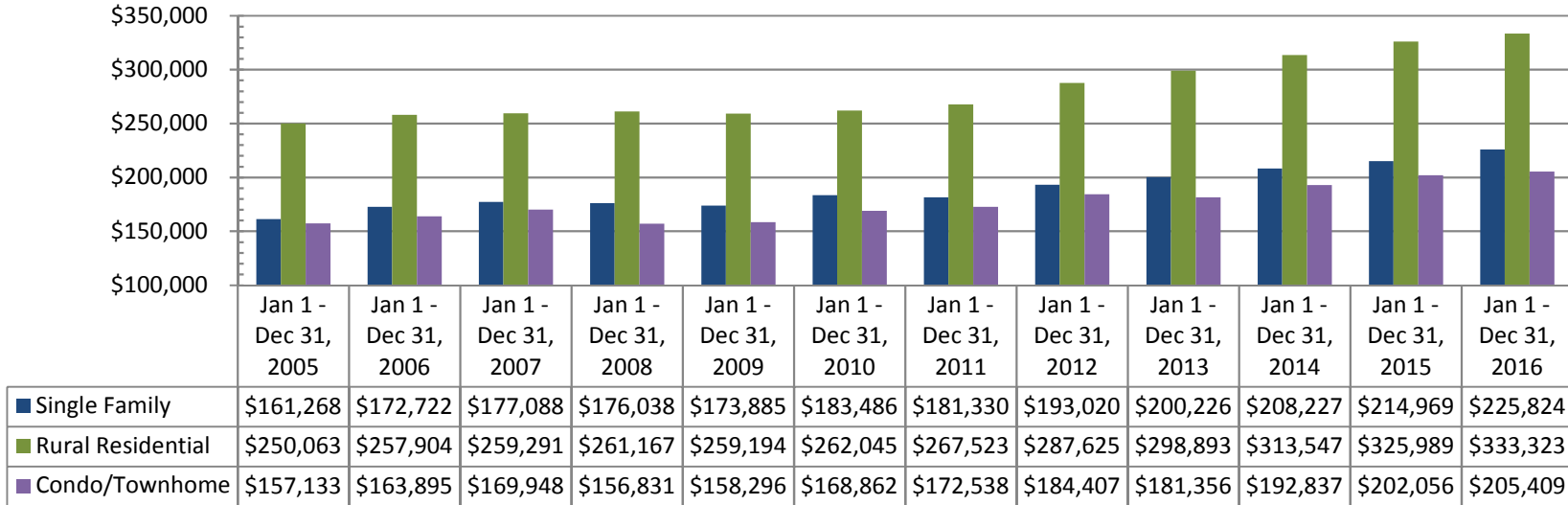
of Homes Sold



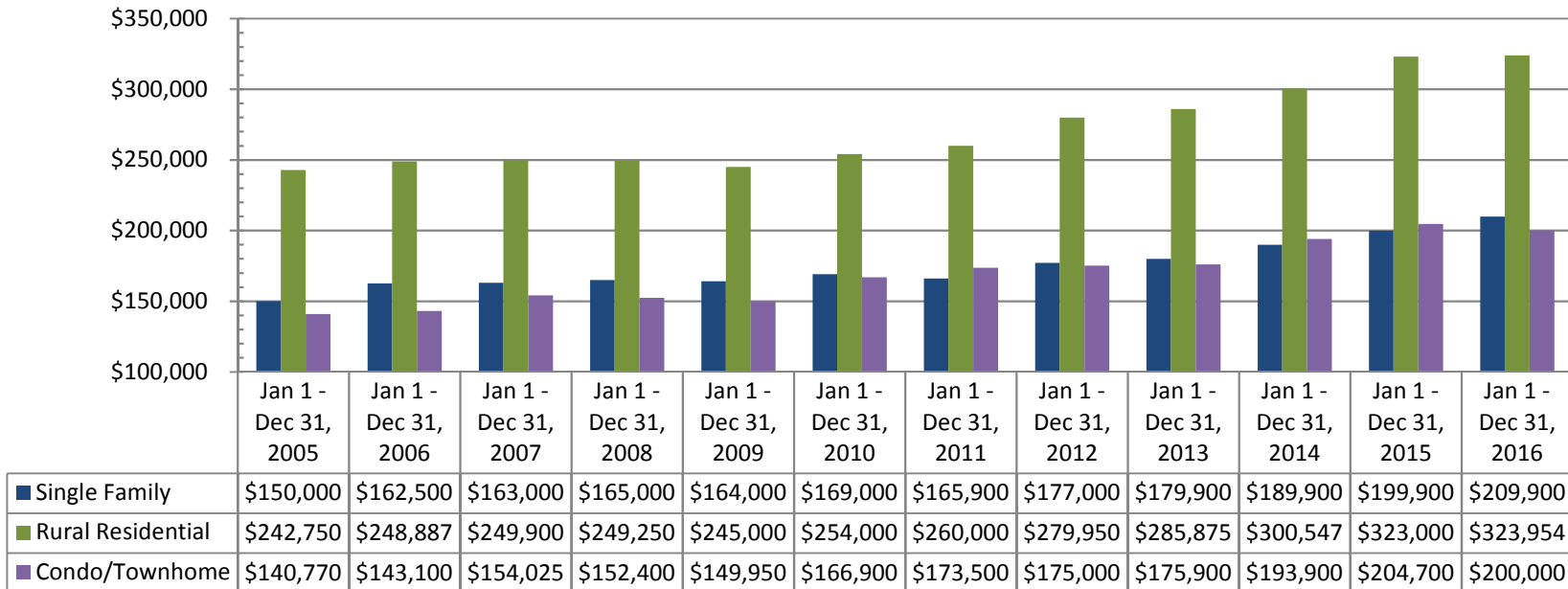
	Jan 1 - Dec 31, 2005	Jan 1 - Dec 31, 2006	Jan 1 - Dec 31, 2007	Jan 1 - Dec 31, 2008	Jan 1 - Dec 31, 2009	Jan 1 - Dec 31, 2010	Jan 1 - Dec 31, 2011	Jan 1 - Dec 31, 2012	Jan 1 - Dec 31, 2013	Jan 1 - Dec 31, 2014	Jan 1 - Dec 31, 2015	Jan 1 - Dec 31, 2016
■ Single Family	1271	1258	1081	964	957	877	934	1049	1167	1209	1307	1316
▲ Rural Residential	352	334	267	222	207	213	245	256	278	332	323	314
✕ Condo/Townhome	256	248	211	185	168	205	175	215	293	285	320	281

Residential Statistics - Laramie County

Average Sale Price

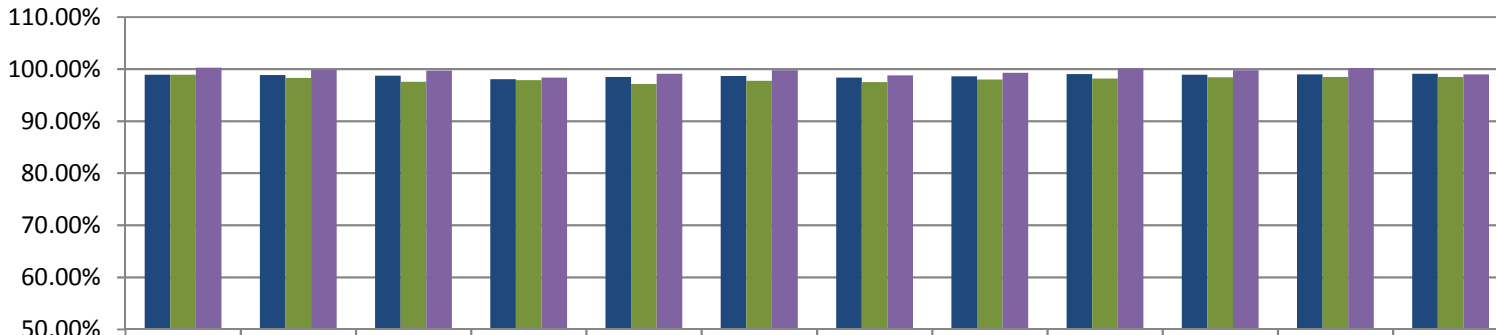


Median Sales Price



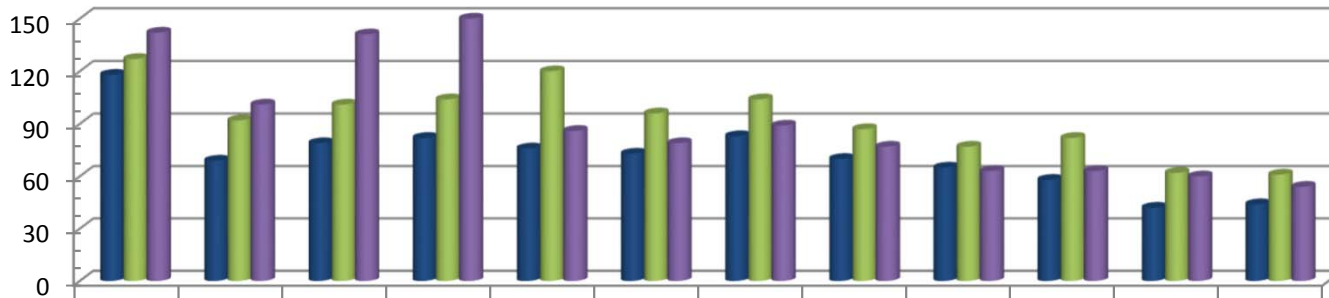
Residential Statistics - Laramie County

Percent of List Price Received at Sale



	Jan 1 - Dec 31, 2005	Jan 1 - Dec 31, 2006	Jan 1 - Dec 31, 2007	Jan 1 - Dec 31, 2008	Jan 1 - Dec 31, 2009	Jan 1 - Dec 31, 2010	Jan 1 - Dec 31, 2011	Jan 1 - Dec 31, 2012	Jan 1 - Dec 31, 2013	Jan 1 - Dec 31, 2014	Jan 1 - Dec 31, 2015	Jan 1 - Dec 31, 2016
■ Single Family	98.88%	98.85%	98.75%	98.02%	98.48%	98.64%	98.35%	98.61%	99.01%	98.91%	98.97%	99.10%
■ Rural Residential	98.91%	98.27%	97.58%	97.84%	97.11%	97.76%	97.49%	98.00%	98.14%	98.41%	98.49%	98.47%
■ Condo/Townhouse	100.24%	99.84%	99.68%	98.32%	99.07%	99.75%	98.77%	99.25%	100.15%	99.80%	100.22%	98.96%

Average Days on Market*



	Jan 1 - Dec 31, 2005	Jan 1 - Dec 31, 2006	Jan 1 - Dec 31, 2007	Jan 1 - Dec 31, 2008	Jan 1 - Dec 31, 2009	Jan 1 - Dec 31, 2010	Jan 1 - Dec 31, 2011	Jan 1 - Dec 31, 2012	Jan 1 - Dec 31, 2013	Jan 1 - Dec 31, 2014	Jan 1 - Dec 31, 2015	Jan 1 - Dec 31, 2016
■ Single Family	118	69	79	82	76	73	83	70	65	58	42	44
■ Rural Residential	127	92	101	104	120	96	104	87	77	82	62	61
■ Condo/Townhouse	142	101	141	152	86	79	89	77	63	63	60	54

*Days on Market is calculated from the date property was listed (List Date) through the date an offer to purchase was accepted (Contract Date)